



Prescott's Industries
 688 HWY 365
 Burnsville, MS 38833
 info@prescotthemp.com
 www.prescottshemp.com
 (662) 255-6224

Elektra

Intro Only



Confident Cannabis ID: 1901KR0033.0094

Sample ID: M190038-02

Matrix: Industrial Hemp

METRC Batch #:

Batch ID:

Sampling Method/SOP: SOP.T.20.010

Batch Size (g):

Date Sampled: 01/10/19 09:00

Unit for Sale:

Date Accepted: 01/10/19

Harvest/Production Date:

Harvest/Process Lot ID:

Cannabinoid Analysis

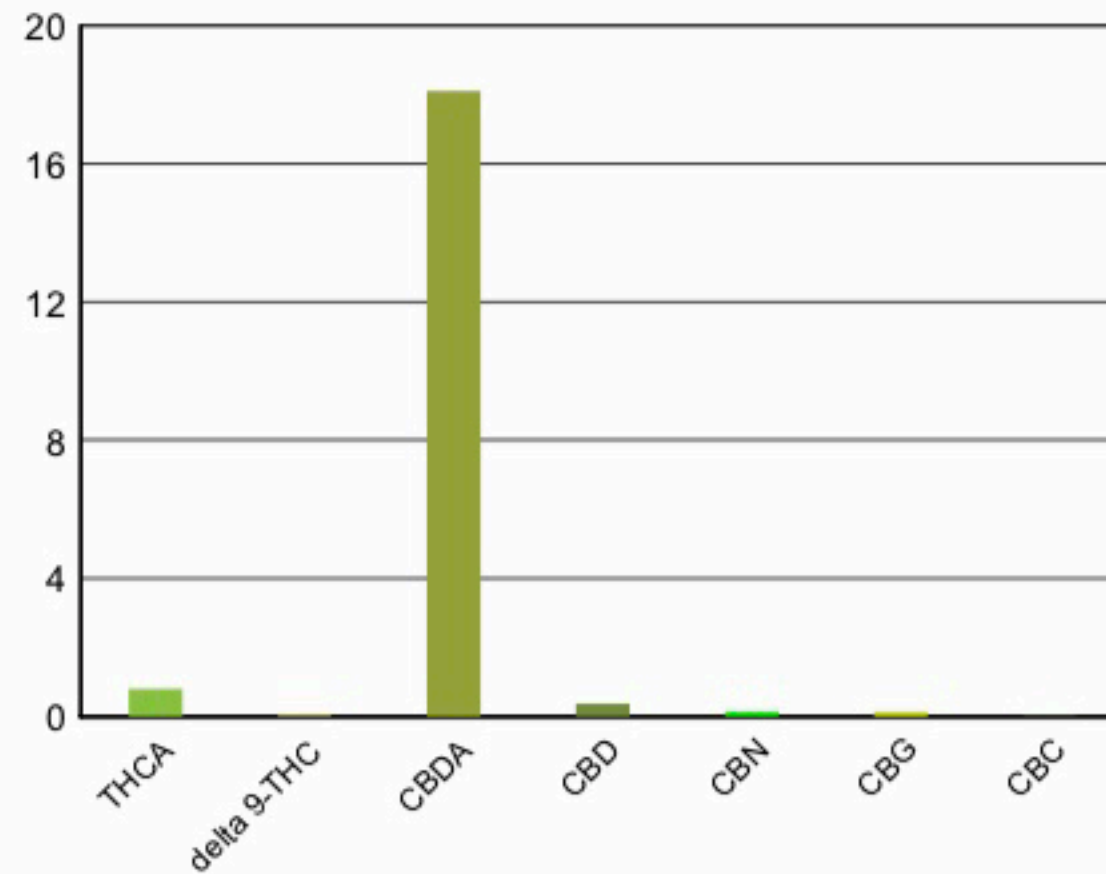
Date/Time Extracted: 01/11/19 14:03

Analysis Method/SOP: SOP.T.40.020

Date/Time Analyzed: 01/11/19 17:35

Cannabinoids	LOQ(%)	mg/g	% weight	Cannabinoid Profile
Total THC <small>((THCA*0.877)+Δ9THC)</small>		7.23	0.723	
Total CBD <small>((CBDA*0.877)+CBD)</small>		163	16.3	

THCA	0.050	7.88	0.788
delta 9-THC	0.050	< LOQ	< LOQ
delta 8-THC	0.050	< LOQ	< LOQ
CBDA	0.050	181	18.1
CBD	0.050	3.7	0.370
CBN	0.050	1.5	0.150
CBG	0.050	1.36	0.136
CBC	0.050	< LOQ	< LOQ
Sum of tested Cannabinoids	0.050	196	19.6



"Total THC" and "Total CBD" are calculated values and are an Oregon reporting requirement (OAR 333-064-0100). For Cannabinoid analysis, only delta 9-THC, THCA, CBD, CBDA are ORELAP accredited analytes. Cannabinoid values reported for plant matter are dry weight corrected; Oregon Water Activity action level is 0.65Aw and Oregon Moisture Content action level is 15%, Samples above limit will be highlighted RED; FD = Field Duplicate; LOQ = Limit of Quantitation.

Ian Riversong
 Laboratory Director - 1/14/2019